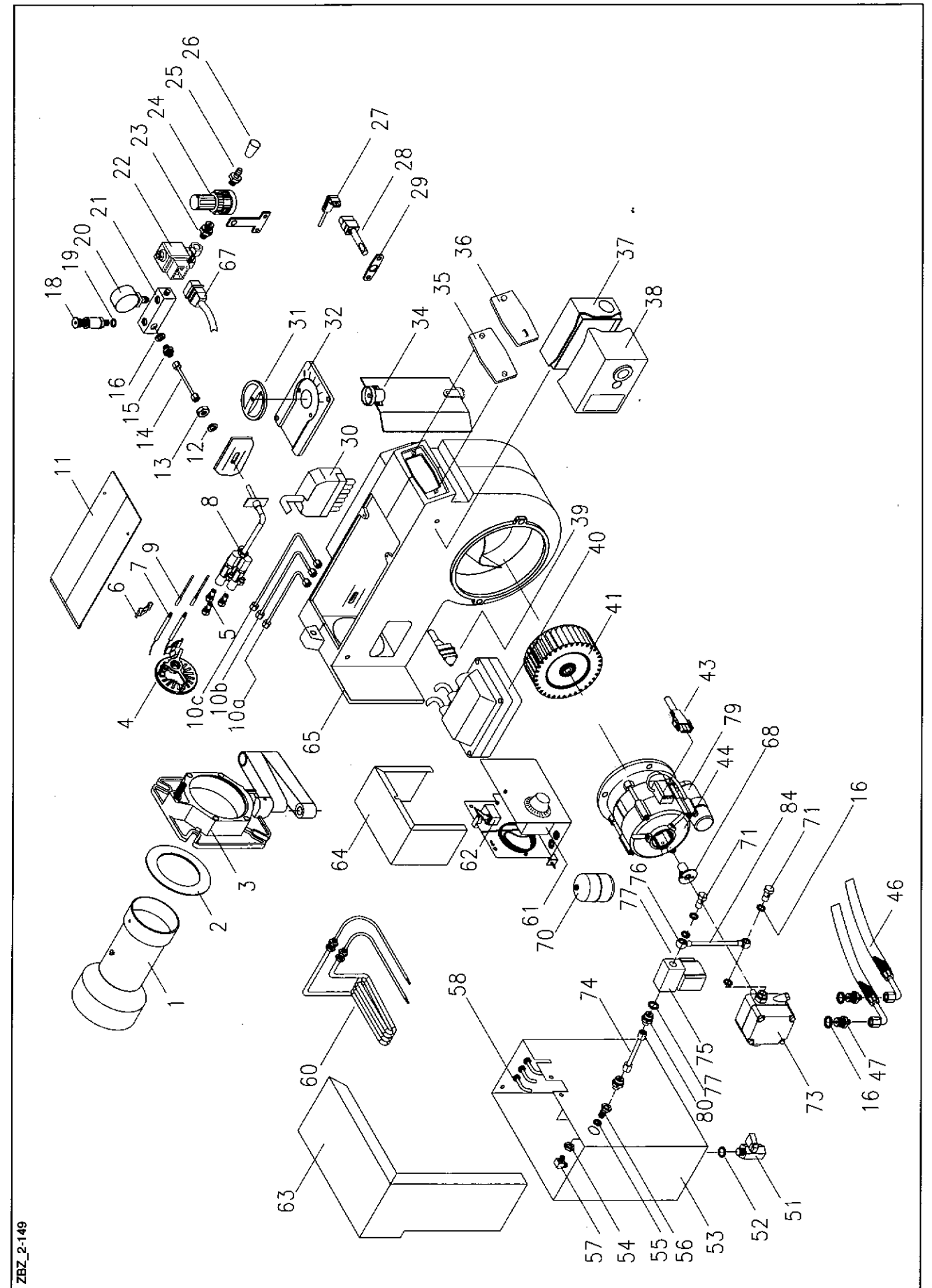


G200

Position	Designation	Art. No.	VE ¹⁾
1	Burner pipe	47-10-10774	1
2	Mounting flange seal	47-50-12094	5
3	Swivel flange, compl. preassembled	47-30-26181	1
4	Diaphragm plate with holder compl.	41-30-20850	1
5	Delavan DA 2 nozzle	59-20-50449	1
7	Ignition electrodes (left + right)	47-90-26511	1
8	Nozzle assembly compl.	37-30-12156	1
9	Ignition cable	47-50-12160	5
10a	Nozzle assembly-oil tank connecting tube (part 1)	47-30-26186	1
10b	Nozzle assembly-oil tank connecting tube (part 2)	47-30-26187	1
10c	Nozzle assembly-oil tank connecting tube (part 3)	47-30-26188	1
15-26	Air distributor, compl. preassembled	47-30-24568	1
15	Pressure pipe nipple Ø 6 x 1/8"	47-50-20127	5
16	Seal AL 14 x 10 x 2	37-50-10788	50
18	Safety valve 1-4 bar	47-10-22344	1
19	Conical nipple AL 13 x 18 x 2	37-50-11293	50
20	Pressure gauge 0-2.5 bar	47-10-12121	1
22	Air solenoid valve EV 01	47-10-11120	1
22	Coil M13 for solenoid valve	59-10-50368	1
24	Replacement pressure regulator	47-30-24594	1
28	photoelectric cell MZ 770S	46-90-10312	1
30	Socket unit, 7-pin, with cable	47-10-11839	1
34	Air flap, compl. preassembled	47-30-12096	1
35	Sight glass	47-50-12105	10
36	Cover for sight glass G55	47-50-12106	10
37	Control unit bottom section S98, 9-pin, compl.	31-90-22664	1
38	Satronic TF 834.3 control unit	37-10-11285	1
40	Ignition transformer	47-10-11260	1
41	Fan wheel 160 x 62	47-10-10665	1
44	Motor 250 W	33-10-10343	1
46	Metal hose, nom. size 6	47-90-11347	1
47	Hose nipple R 1/4" x 8LL	37-50-11348	10
51-60	Oil tank with heating coil, compl. preassembled	47-30-26165	1
51	Drain valve	47-10-10472	2
52	Seal 24 x 16 x 2	47-50-10516	10
53	Oil tank	47-10-24519	1
60	Heating coil 1100 W	47-10-24505	1
61	Jumo surface-mounting thermostat	47-10-22805	1
62	Twin microswitch	47-10-10601	1
68	Coupling	37-50-10110	10
70	Float	47-10-22420	1
71	Banjo screw R 1/8"	37-50-10736	10
73	Suntec D45B oil pump	47-10-26160	1
73	Pressure pump kit (filter + cover seal)	47-20-26510	1
74	Solenoid valve-oil tank connecting tube	47-30-26512	1
75	Solenoid valve R 1/4" SV04	36-10-11583	1
75	Coil M20 for solenoid valve	47-10-24686	1
79	Capacitor 8 µF	59-10-50280	1
80	Hose nipple R 1/4" x 6LL	47-50-20862	10
81	Solenoid valve-pump connecting tube	47-30-26162	1

G200



ZBZ_2-149

E 04-2000 • G. 23.09.08

E 04-2000 • G. 23.09.08